

# Doors

## DA-60

With the DA-60 door, Panelship shows that neither robustness nor security is lost in this design. As with all our doors, this one is supplied complete and ready for fast, simple installation, including: frame, counter-frame, metal fittings and all types of accessories for correct operation.



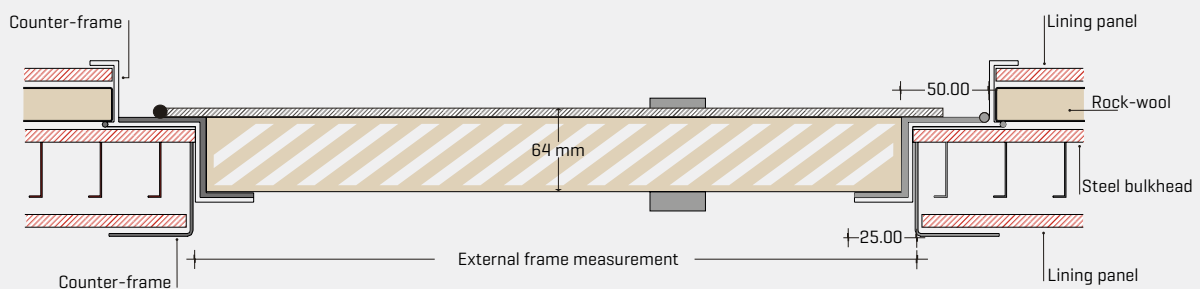
## DA-60

Fire classification	A-60
Integrity	68 min. [test. Shut-down]
Leaf door	PVC covering Painted or stainless steel
Frame door	Painted or stainless steel
Leaf thickness	64 mm
Acoustic insulation	40 dB
Insulation material	Mineral rock wool
Stainless steel hinges	3
Weight [1900 x 800]	75 kg



# Assembly instructions

- 1 A perimeter cavity is opened at 5 mm above the upper cut in the frame.
- 2 The door leaf is hung.
- 3 The frame is fully fixed to the bulkhead, so that its vertices are at 90 ° and the frame measurements are the same as its vertical and horizontal ones.
- 4 It is fastened with spot welding on the four sides with 300 mm separations and 10 mm beads. This welding must be carried out using TIG that is as fine as possible for a better finish.
- 5 Once secured, the perimeter is closed off using continuous welding on one of the two faces.
- 6 The weld should be cleaned and the corresponding or required protection treatment applied.
- 7 The door leaf is hung and the clearance checked to ensure it has not varied due to welding stresses.



External frame measurement= Clear opening + 50 mm  
 Cavity to open in panel= external frame measurement + 10 mm of clearance

