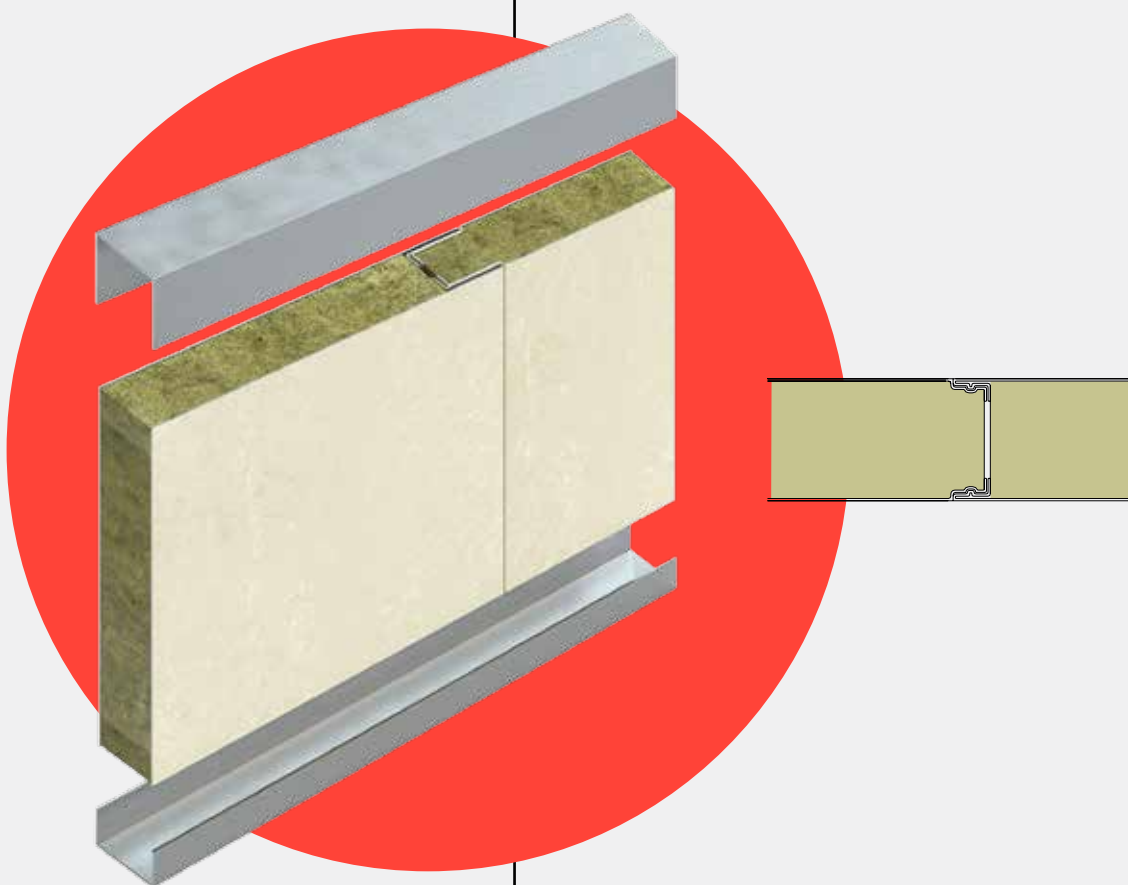


# Panels

## Panel TGS B-15 [25 mm]

The panel TGS B-15 is a panel system employing a dovetail joint system in which the insulation-thickness ratio is maximally optimised. Its discrete elegant joining system of a single joint enables it to be employed in practically any type of construction.



### TGS B-15

Fire classification	B-15
Standard width	558 mm
Maximum length	Up to 5.000 mm
Width	200-1.188 mm
Thickness	25 mm
Weight	13.7 Kg/m <sup>2</sup>
Acoustic insulation	Rw=29 dB
Thermal insulation	U=1.12 W/m <sup>2</sup> K
Application	Lining and division



# Assembly instructions

- 1 The perimeter outlines are fixed on the floor and the upper vertical outlines on the ceiling. They will determine the securing guide for the bulkhead made up of the panels. These profiles will be secured by alternate spot welding every 200 mm.
- 2 The first panel will be installed following the established movement sequence.
- 3 The contiguous panel will be installed the same way as the previous one, completely tangential to the previous one at the profiled edges and completely glued.
- 4 The two panels will be joined with the CLIP, which is inserted with gentle pressure, the male on the narrow section of the contiguous panel [female].
- 5 Steps 3 and 4 are repeated until the surface to cover is completed.

## Fastening examples

We can make any type of fastening, according to the client's requirements.

